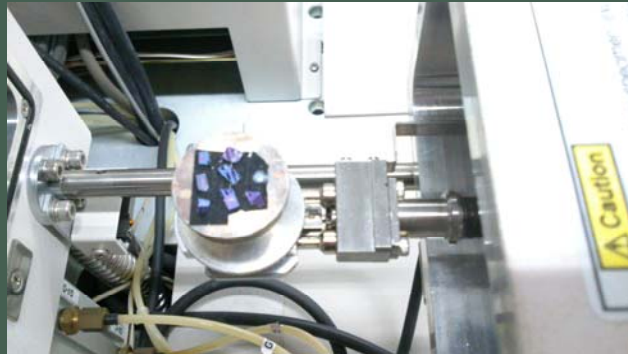
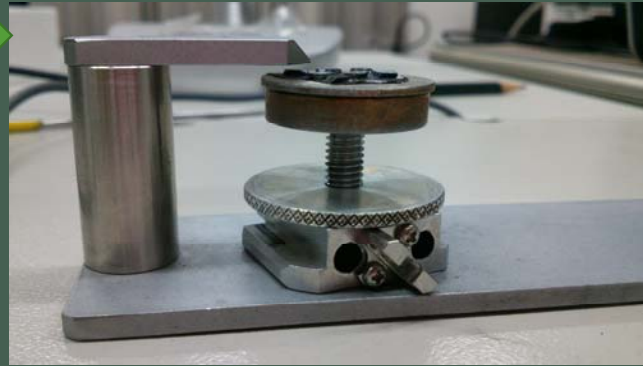
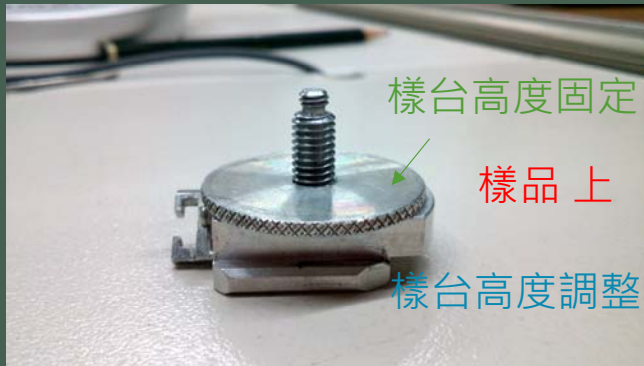




掃描式電子顯微鏡
S 4800

操作步驟手冊 楊雅雲 技術師製

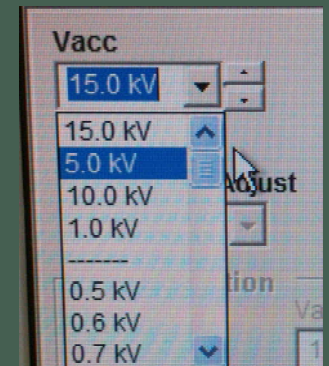
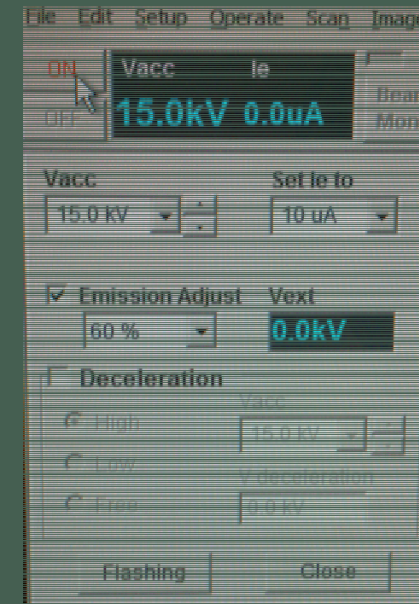
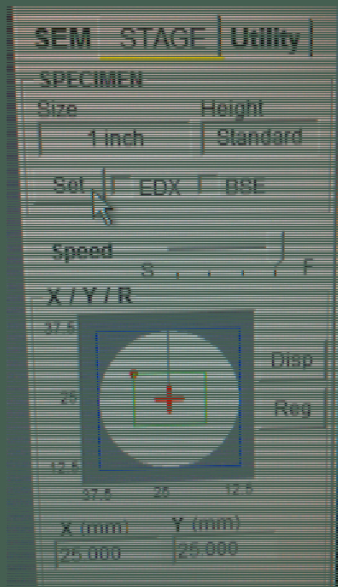
一、樣品台高度調整與進樣-1



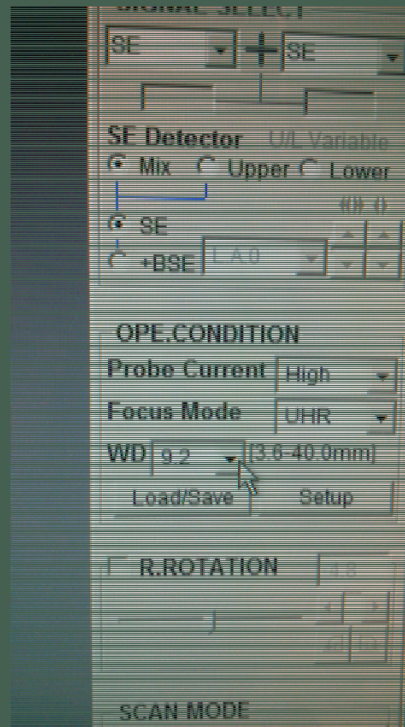
一、樣品台高度調整與進樣-2



二、樣品台尺寸設定與電壓調整



三、樣品觀測與工作距離WD調整



Z軸調整與角度(T)選擇



高低倍率切換

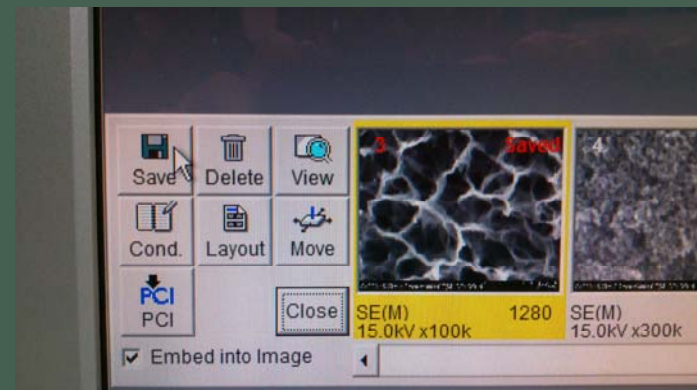
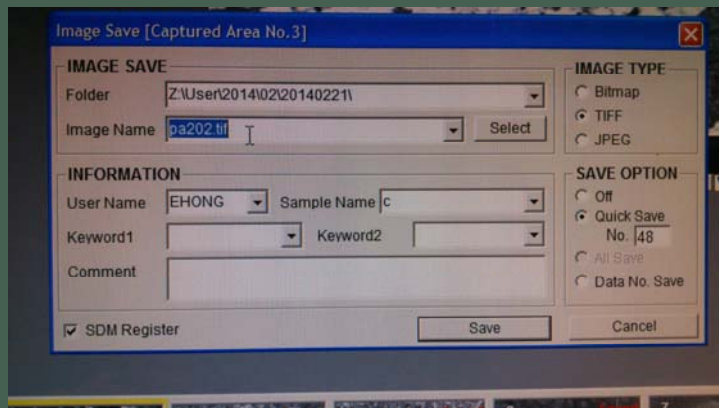
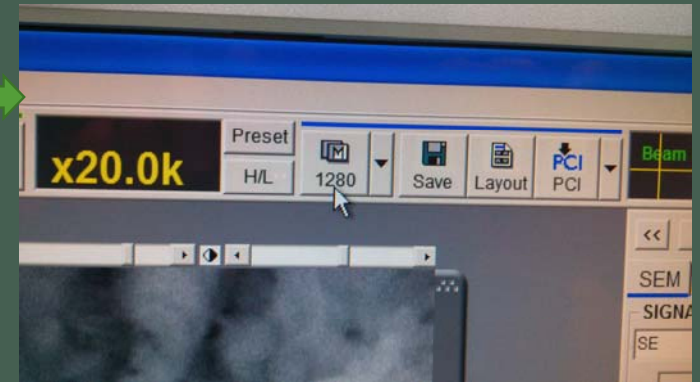
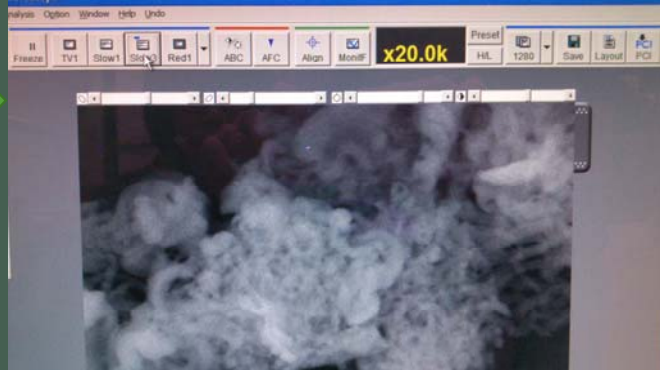
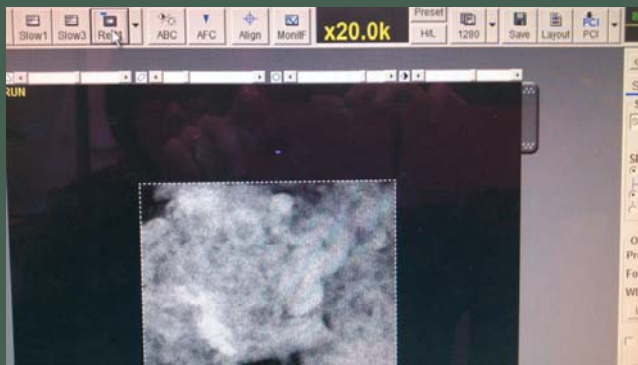
四、焦聚/相差調整與樣品台旋轉



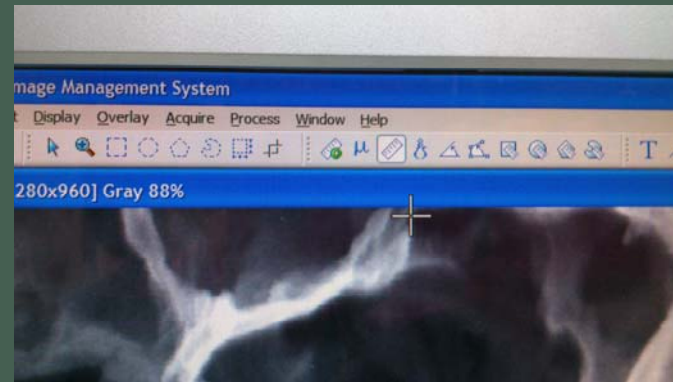
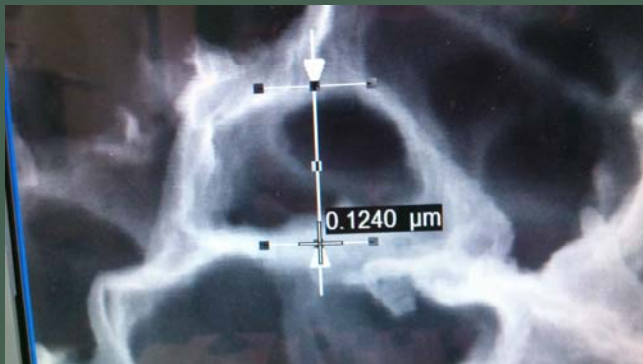
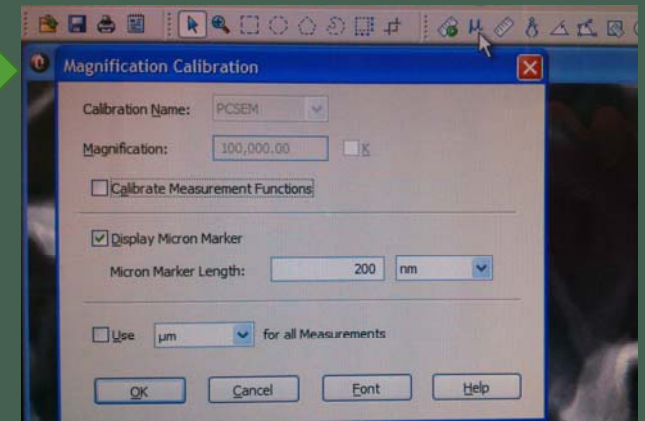
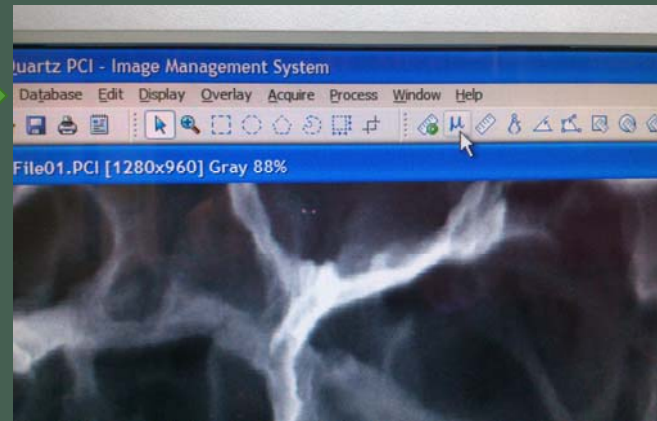
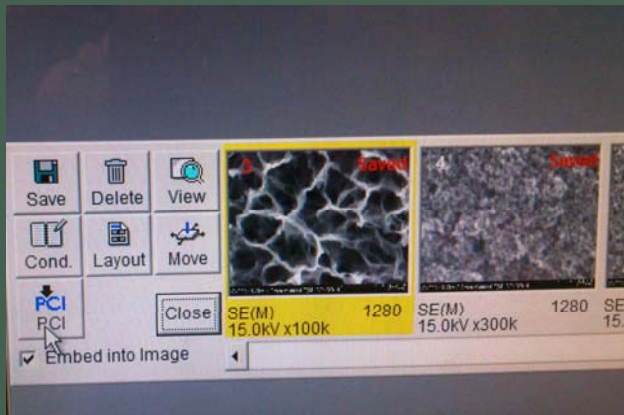
二次電子
與背向散
射電子

樣品台旋轉

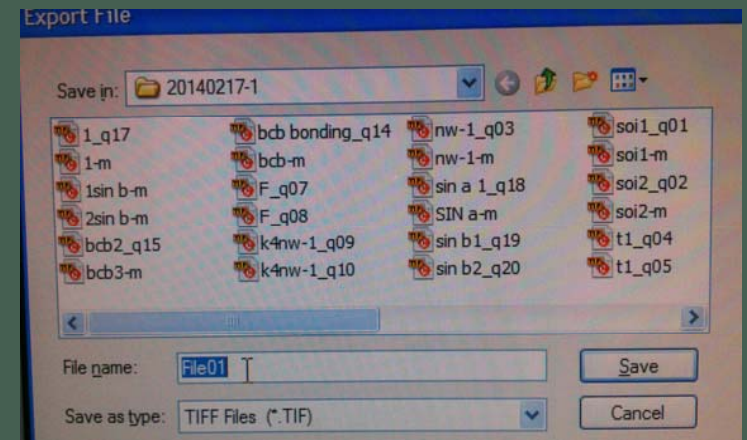
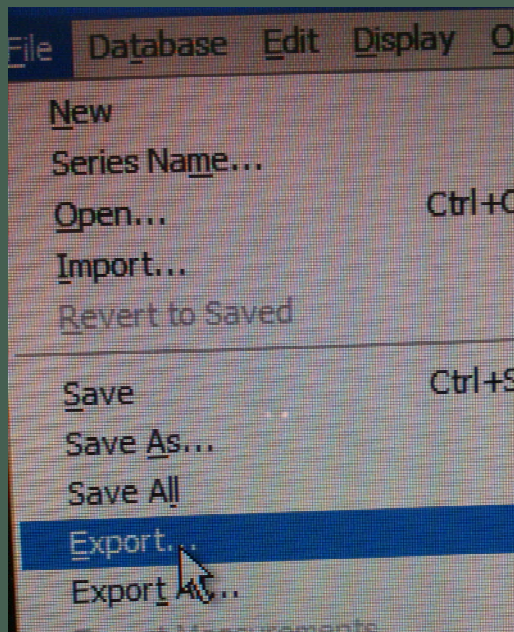
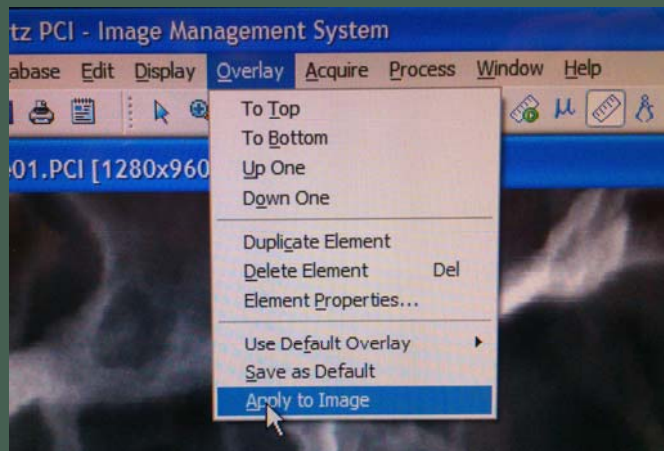
五、影像拍攝與存檔



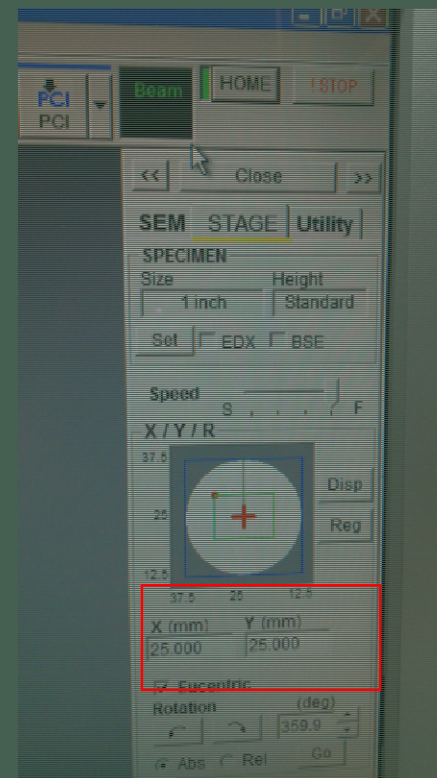
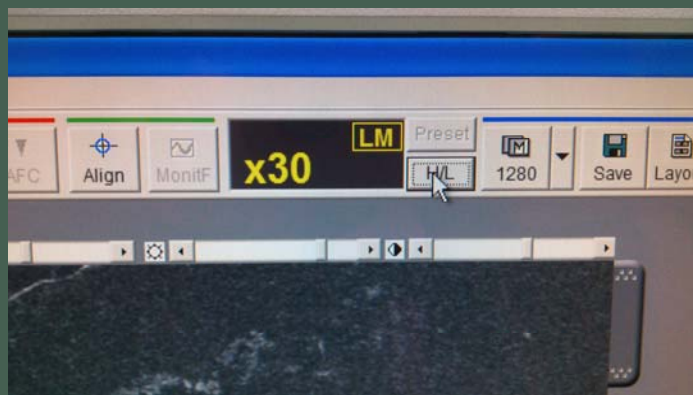
六、影像尺寸量測-1



六、影像尺寸量測-2



七、樣品台歸位退片與下方暫存影像清除



取出樣品台注意事項：
→ 所有調整過的都要歸回原樣(WD; 旋轉; Z; T)